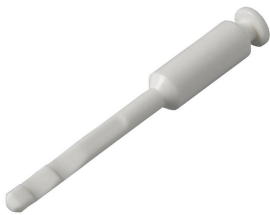




Part Number : [194170119](#)
Product Description : MX150L Circuit Voiding
Key for 22-14 AWG Housings, 38.30mm
Length
Series Number : 19417
Status : Active
Product Category : Connector Accessories



Documents & Resources

Drawings
[194170119_sd.pdf](#)

Specifications
[AS-19417-001-001.pdf](#)

Product Environment Compliance

Compliance

GADSL/IMDS	Not Relevant
China RoHS	
EU ELV	Not Relevant
Low-Halogen Status	Low-Halogen per IEC 61249-2-21
REACH SVHC	Not Contained per D(2024)6225-DC (07 Nov 2024)
EU RoHS	Compliant per EU 2015/863

Multiple Part Product Compliance Statements

- Eu RoHS
- REACH SVHC
- Low-Halogen

Multiple Part Industry Compliance Documents

- IPC 1752A Class C
- IPC 1752A Class D
- Molex Product Compliance Declaration
- IEC-62474
- chemSHERPA (xml)

Part Details

General

Status	Active
Category	Connector Accessories
Series	19417
Description	MX150L Circuit Voiding Key for 22-14 AWG Housings, 38.30mm Length
Comments	Insulation Resistance: 1000 Megohms
Component Type	Voiding Key
Product Name	MX150L
UPC	756054905425

Physical

Circuits (Loaded)	1
Circuits (maximum)	1
Gender	Dual
Lock to Mating Part	None
Net Weight	0.500/g
Packaging Type	Bag
Temperature Range - Operating	-40° to +125°C

Use with Part(s)

Description	Part Number
MX150L Receptacle Housings	<u>19418</u>
MX150L Plug Housings	<u>19419</u>
MX150L Rear Mount Flange Plug Housings	<u>19435</u>
